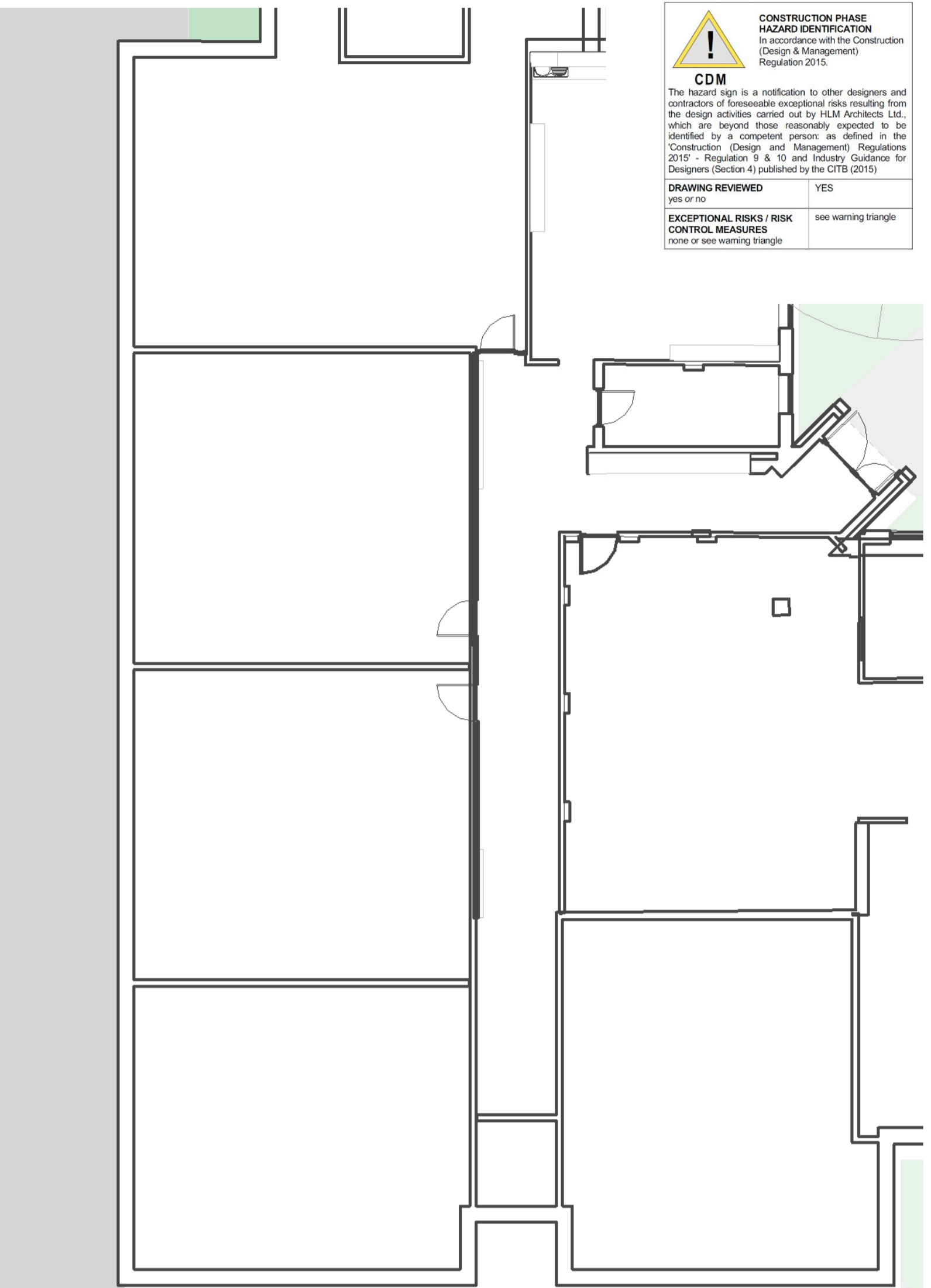


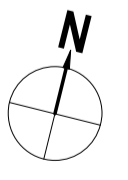
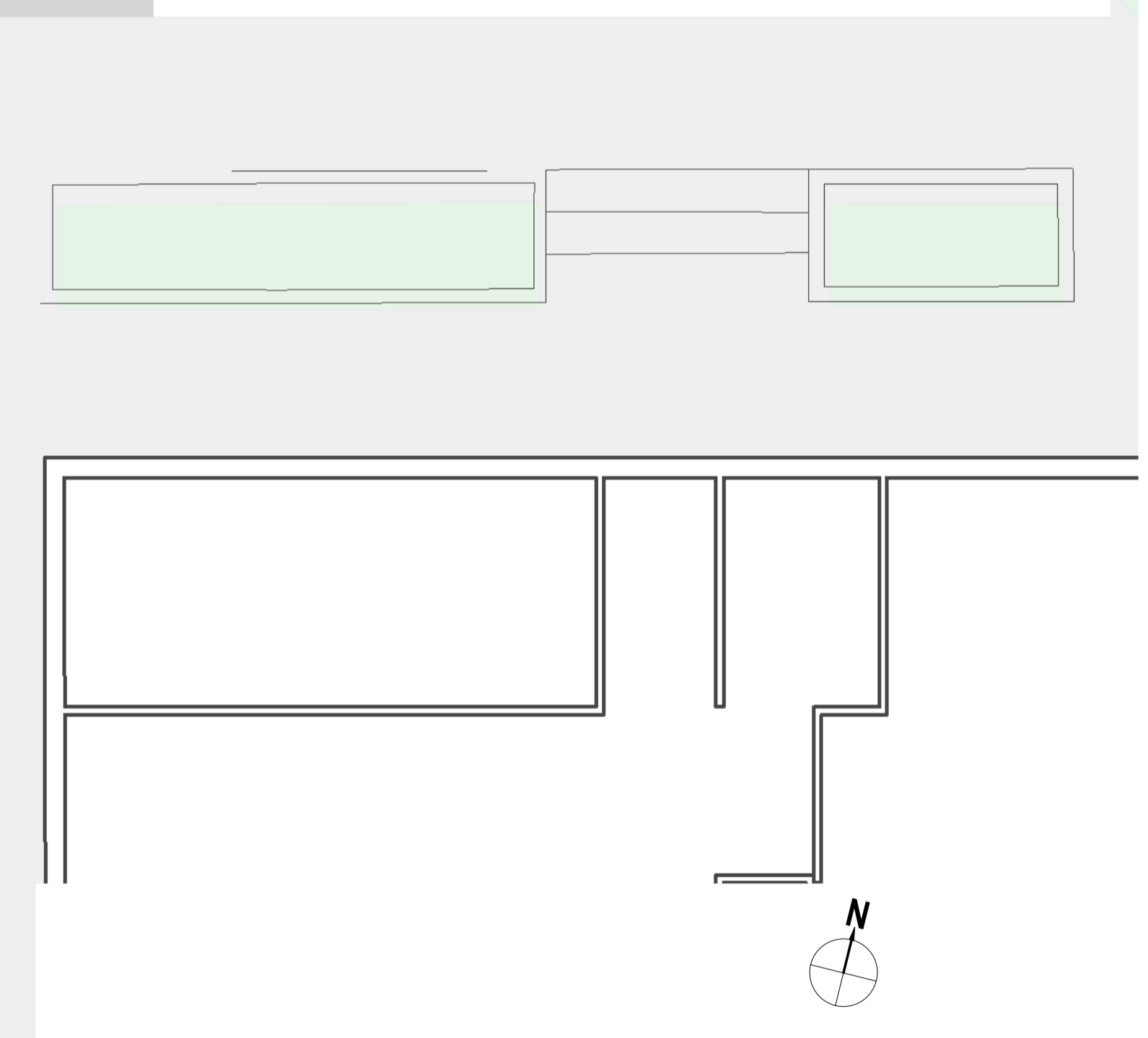
CONSTRUCTION PHASE HAZARD IDENTIFICATION
In accordance with the Construction (Design & Management) Regulations 2015.

CDM
The hazard sign is a notification to other designers and contractors of foreseeable exceptional risks resulting from the design activities carried out by HLM Architects Ltd, which are beyond those reasonably expected to be identified by a competent person, as defined in the Construction (Design & Management) Regulations 2015 - Regulation 9 & 10 and Industry Guidance for Designers (Section 4) published by the CITB (2015)

DRAWING REVIEWED	YES
EXCEPTIONAL RISKS / RISK CONTROL MEASURES	see warning triangle none or see warning triangle



91

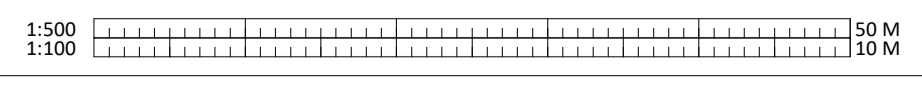


Project	The Piggott School	Title	GROUND FLOOR (PHASE 1) DINING PROPOSED	Scale @ A1	1:100@A1	Drawn	AL
Client	WOKINGHAM BOROUGH COUNCIL	Date	11.11.2022	Checked	KP	Revisions	S4 STAGE APPROVAL
Revisions		Revision No.	PGT-HLM-P1-00-DR-A-00151	Revision	P04	Suitability	

Notes Check all dimensions on site. Do not scale from this drawing. Report any discrepancies and omissions to HLM Architects. This Drawing is Copyright ©

© HLM Architects
Wool + Tailor Building
Fifth Floor
10-12 Aisle Street
London E1 8DE

www.hlmarchitects.com
T. +44 (0) 20 7921 4800
F. +44 (0) 20 7921 4850
london@hlmarchitects.com



This page is intentionally left blank